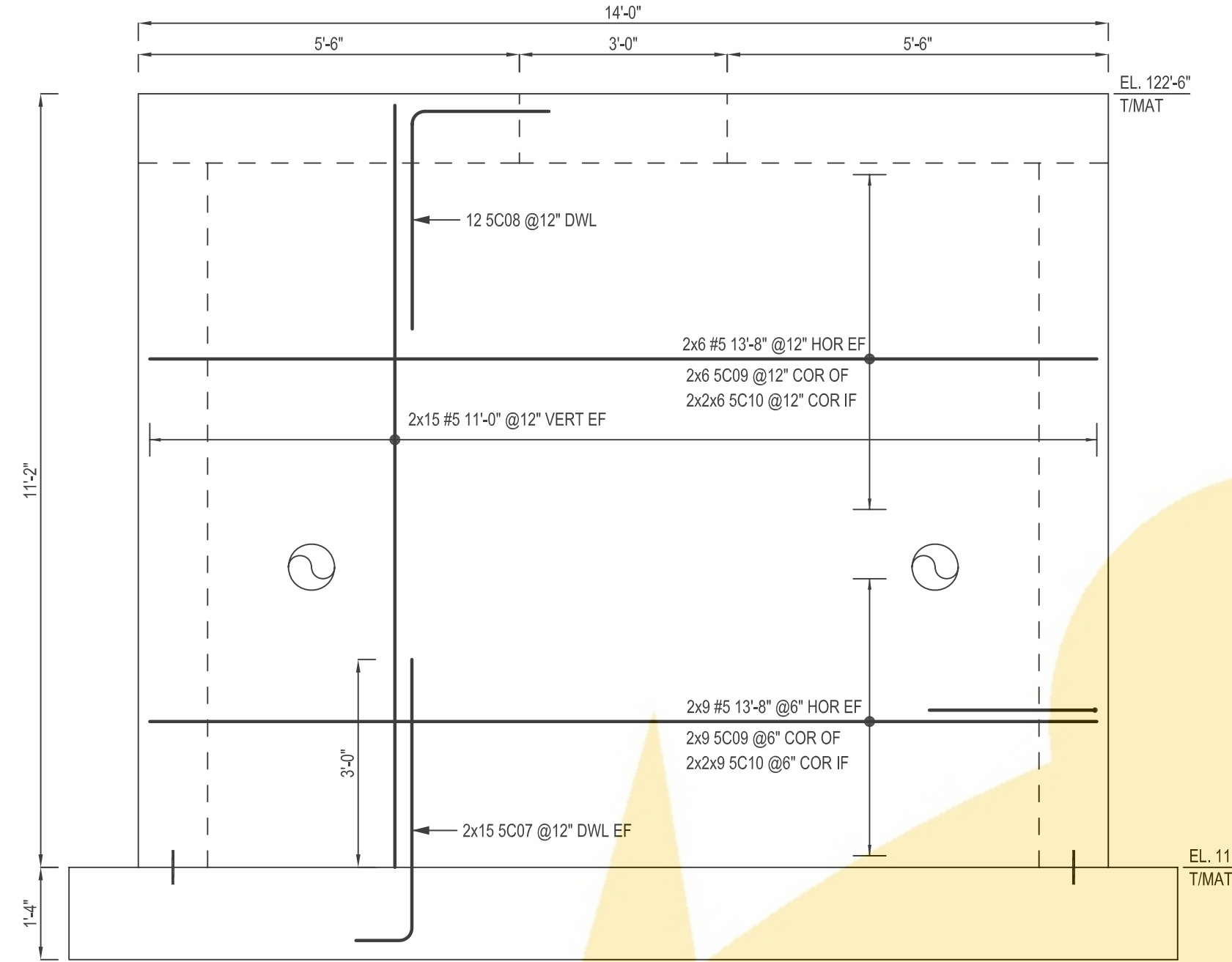
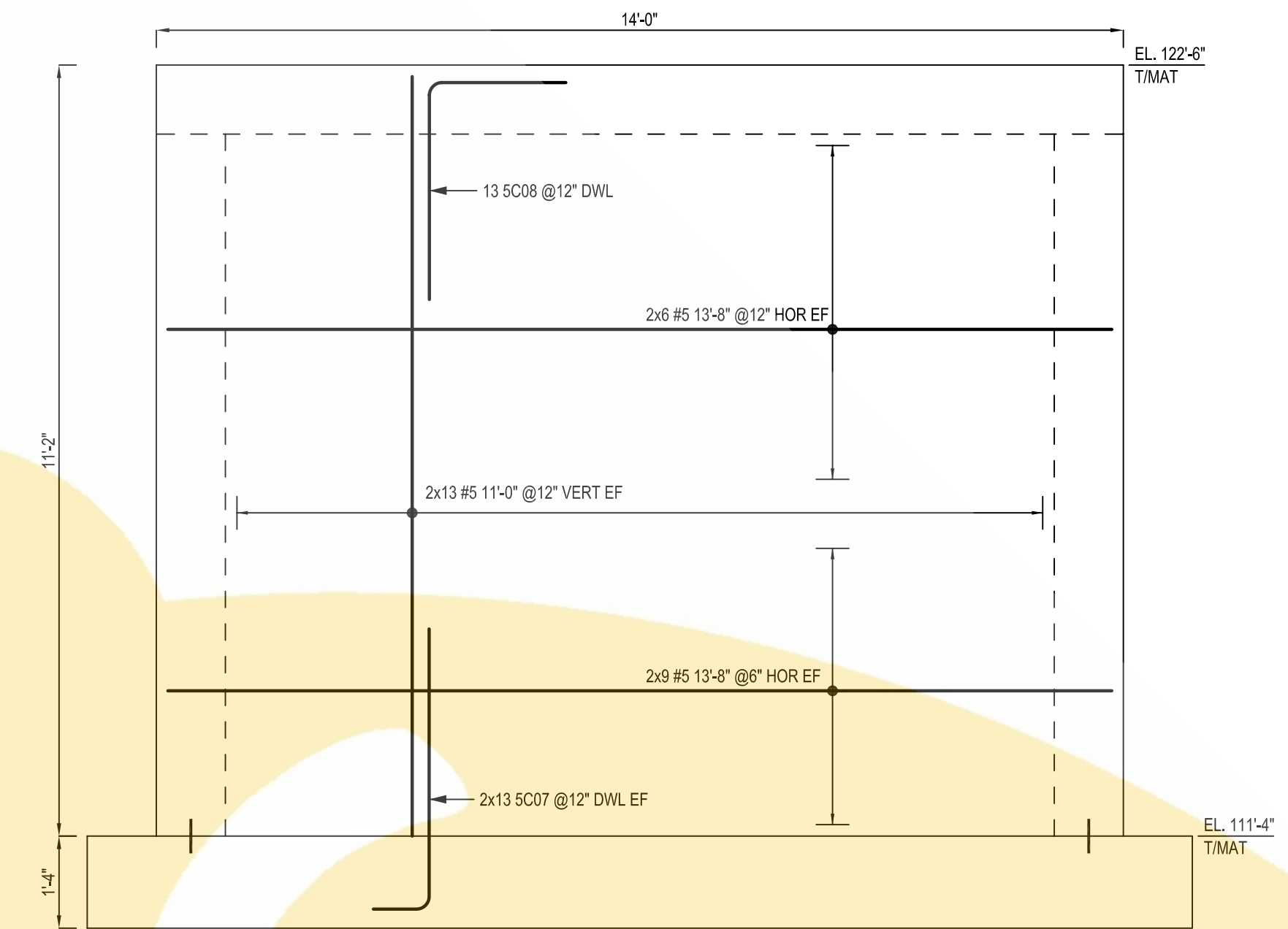


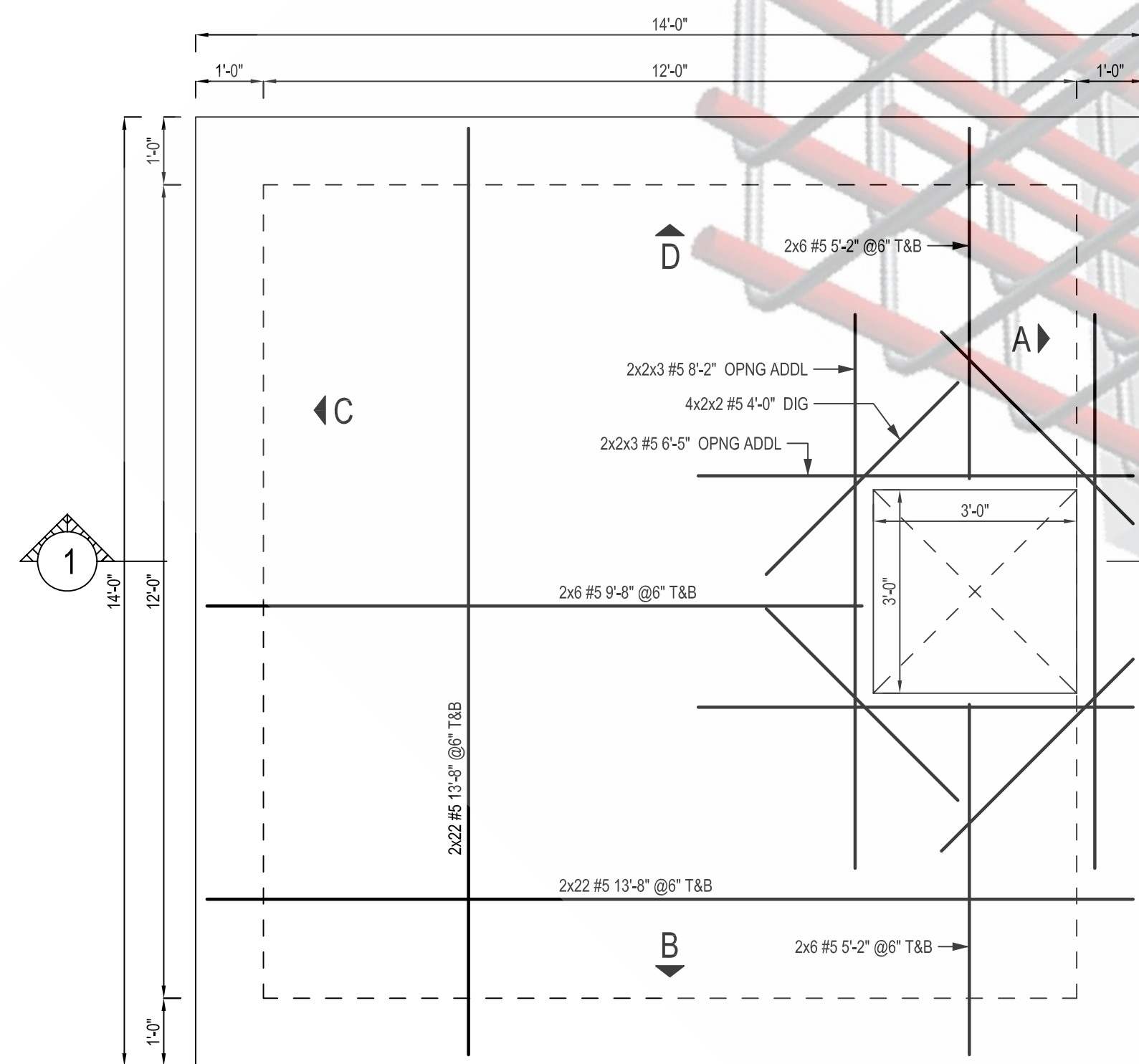
BASE MAT REBAR LAYOUT
 SCALE: 1/2"=1'-0"
 SDR: 30 S-101



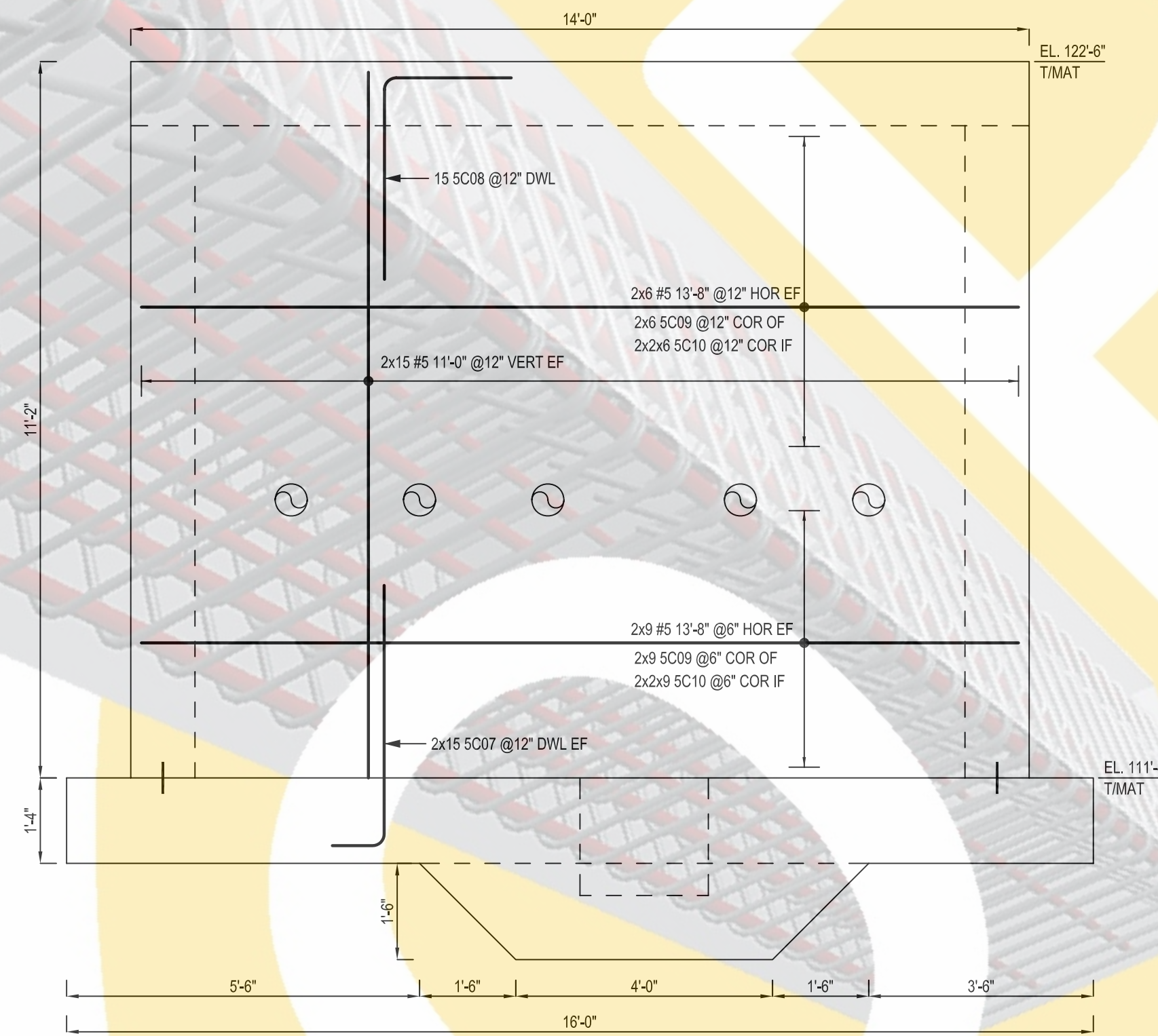
ELEVATION A
 SCALE: 1/2"=1'-0"
 SDR: 30 S-101



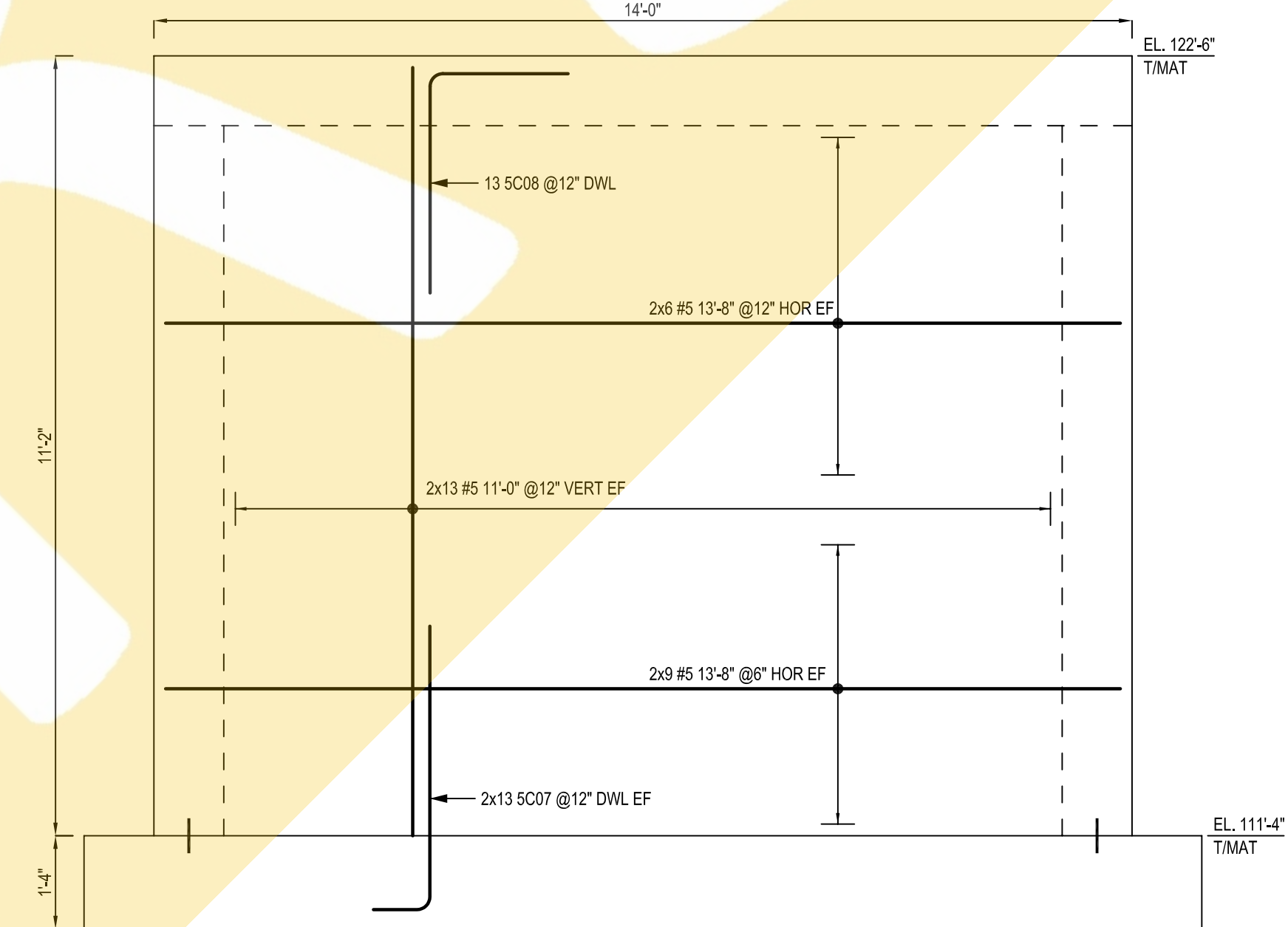
ELEVATION B
 SCALE: 1/2"=1'-0"
 SDR: 30 S-101



TOP MAT REBAR LAYOUT
 SCALE: 1/2"=1'-0"
 SDR: 30 S-101

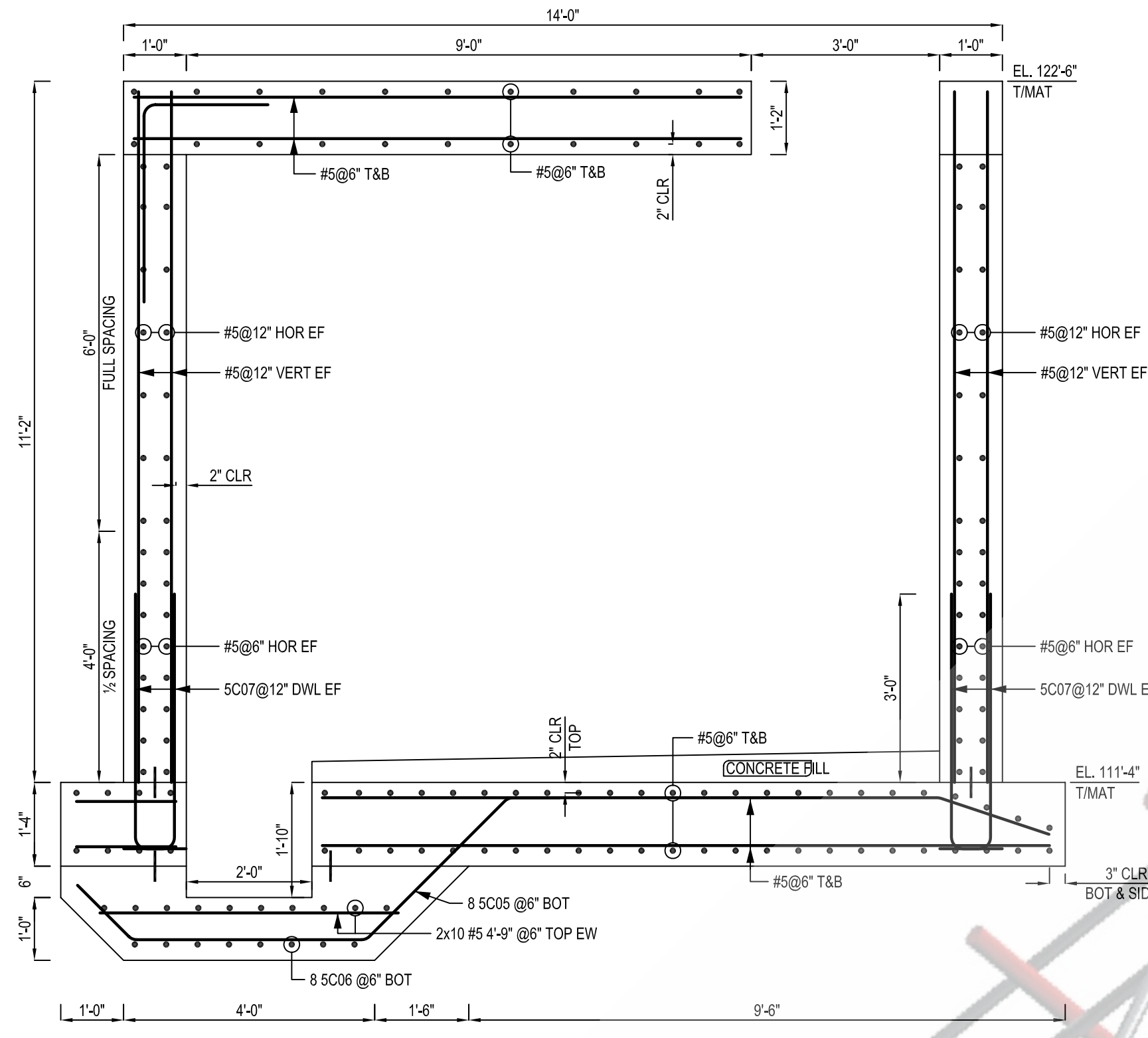


ELEVATION C
 SCALE: 1/2"=1'-0"
 SDR: 30 S-101



ELEVATION D
 SCALE: 1/2"=1'-0"
 SDR: 30 S-101

ONCE REBAR SERVICES

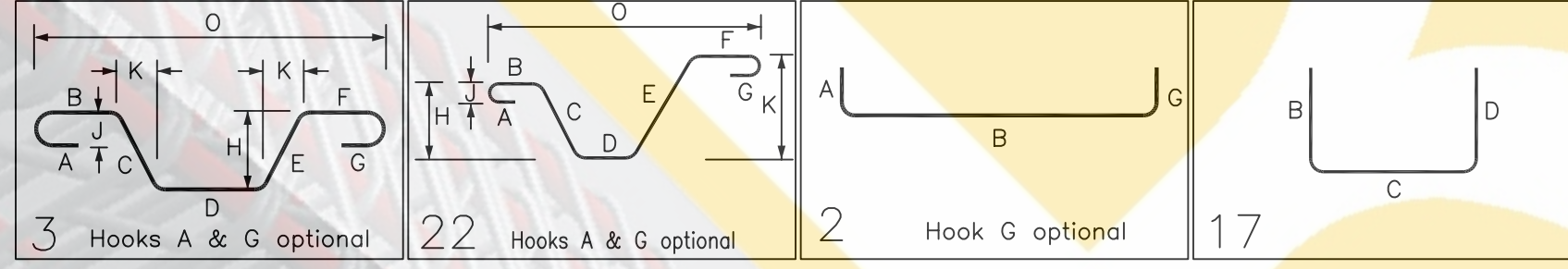


SECTION 1
SCALE: 1/2"=1'-0"
SDR: 30 S-101

LAP		
SIZE	4000 PSI	
	TOP	OTHERS
#3	23	17
#4	30	22
#5	38	29
#6	45	34
#7	66	51
#8	76	58
#9	86	66
#10	96	74

Release Number: R3.01-R3.02

Bar Mark	Qty	Size	Total Length	Type	BENDING DETAILS												
					'A'	'B'	'C'	'D'	'E'	'F'	'G'	'H'	'I'	'J'			
SC01	4	#5	11'-7 3/4"	3		1'-10"	9'-9 3/4"										
SC02	4	#5	5'-7 3/4"	3		1'-10"	3'-9 3/4"						1'-3"	3'-7 3/4"	5'-5 3/4"		
SC03	4	#5	7'-7 3/4"	3		1'-10"	5'-9 3/4"						1'-10 1/2"	5'-6"	7'-4"		
SC04	44	#5	15'-8"	3		1'-10"	12'-0"	1'-10"					0'-7 1/2"	1'-8 3/4"	15'-5 3/4"		
SC05	8	#5	9'-0 3/4"	22		0'-10"	3'-2 3/4"	3'-9"	1'-2 3/4"				2'-3 3/4"	0'-10 3/4"	7'-7 3/4"		
SC06	8	#5	12'-5 3/4"	3		1'-0"	3'-4 3/4"	3'-9 3/4"	3'-4 3/4"	1'-0"			2'-4 3/4"	2'-4 3/4"	10'-5 3/4"		
SC07	112	#5	4'-11"	2		0'-10"	4'-1"										
SC08	53	#5	5'-2"	17			3'-2"	2'-0"									
SC09	60	#5	4'-10"	17			2'-5"	2'-5"									
SC10	120	#5	3'-3"	2		0'-10"	2'-5"										



ONCE REBAR SERVICES